

# Sainte-Maure-de-Touraine / Châtellerault

## La Scandibérique



<b>Départ</b> Ste-Maure-de-Touraine	<b>Arrivée</b> Châtellerault
<b>Durée</b> 2 h 45 min	<b>Distance</b> 41,26 Km
<b>Niveau</b> I cycle often	<b>Thématique</b> Industrial heritage

Here, following the Scandibérique brings you back beside a river, this time the Vienne, at Marcilly-sur-Vienne. This stage follows its west bank, offers views of lovely landscapes. Vaux-sur-Vienne, climbing the slope from the river, is a village in a lovely green setting from which to embark on walks. Finally, the town of Châtellerault comes into view. Before and after World War I, it was known for manufacturing Lebel guns; after the factory closed in 1968, it was subsequently transformed into an ice-skating rink and cultural space, a sign of peace for future generations.

### The route

Mainly on minor roads. Take care entering Châtellerault, with the roundabouts either side of the Henri IV Bridge. Signposting for the EV3 has been put in place through the county of Vienne.

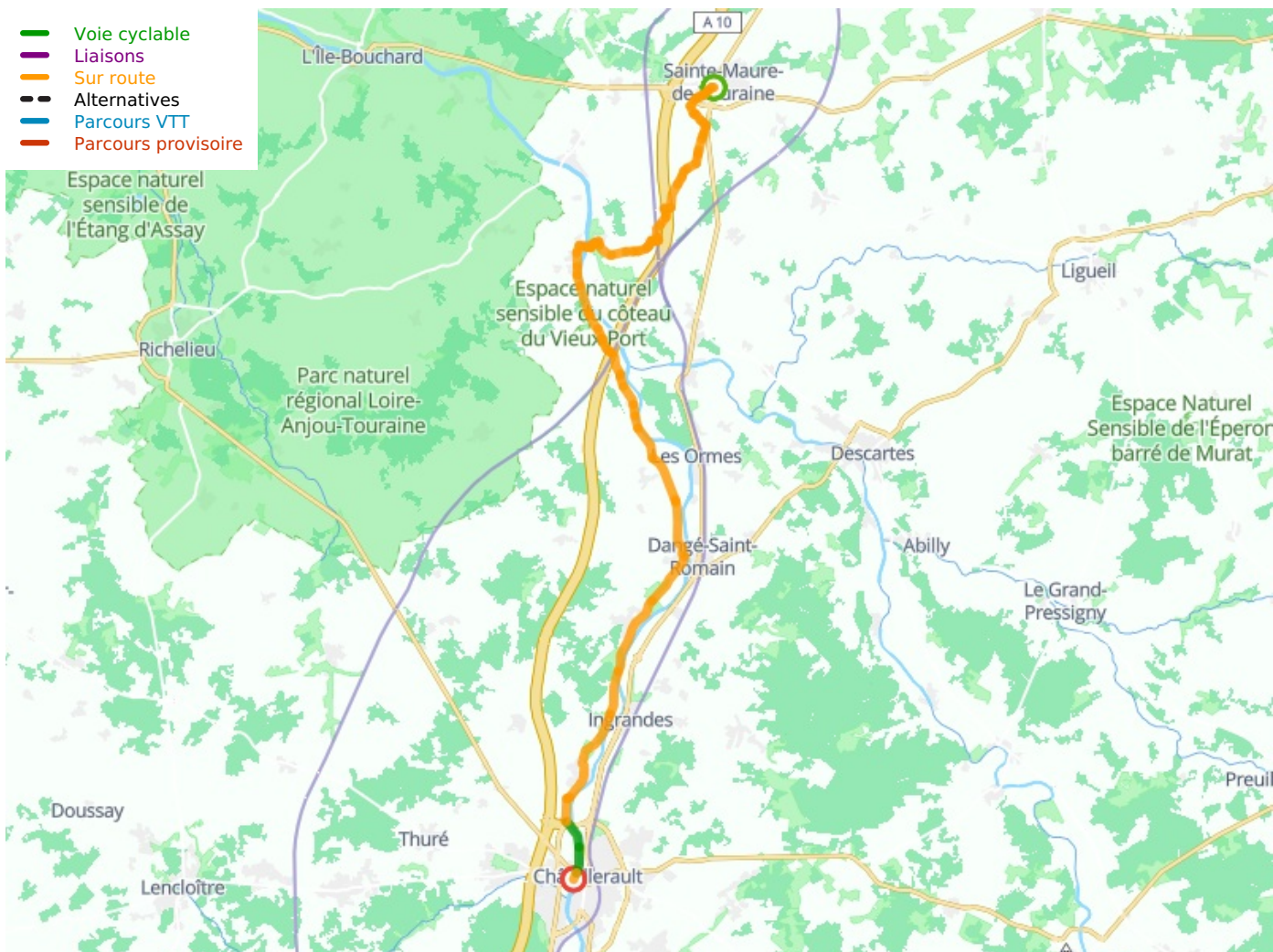
**Surfacing smooth:** asphalt

### Trains

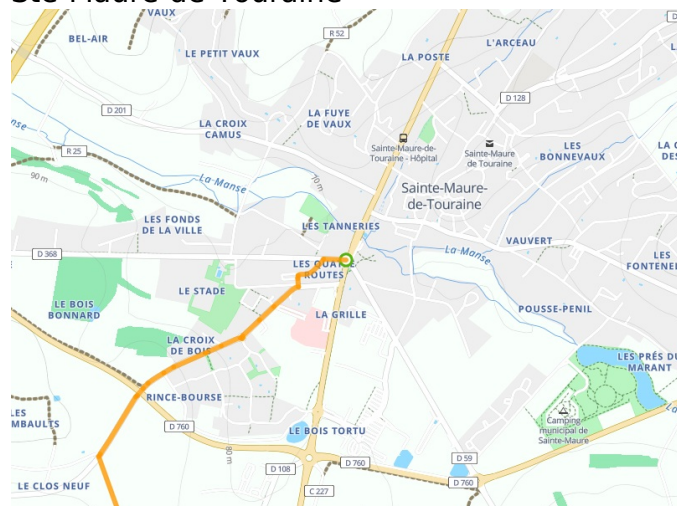
- Sainte-Maure Noyant train station
- Maillé train station
- Les Ormes train station
- Ingrandes train station
- Châtellerault train station

### Don't miss

- **Ste-Maure de Touraine:** Boumiers neolithic dolmen; the château; the church; the remarkable covered market
- **Maillé:** Maison du Souvenir, recalling how German forces destroyed the village in 1944, after which it was reconstructed
- **Draché:** the neolithic menhir of La Pierre Percée
- **Nouâtre:** the remnants of the Château de la Motte
- **Ingrandes-sur-Vienne:** the church; the Domaine de la Groie, with the remnants of a medieval château
- **Châtellerault:** its heritage, including industrial



## Départ Ste-Maure-de-Touraine



## Arrivée Châtellerault

