

Meung-sur-Loire / Blois

La Scandibérique



Départ Meung-sur-Loire	Arrivée Blois
Durée 2 h 50 min	Distance 42,74 Km
Niveau I begin / Family	Thématique Major site

Beaugency, a member of the association Les Plus Beaux Détours de France, boasts an unmissable heritage, including its 12th-century bridge with 23 arches spanning the Loire. In summer, its quays transform into a beach, and a maize field turns into a labyrinth! Families cycling the route will love stopping here. Elsewhere, the striking contrast between picturesque villages and castles and St-Laurent-des-Eaux nuclear power station reminds tourists of the Loire's shifting importance down the centuries. Reaching the bridge at Muides-sur-Loire, either follow the Loire closely as far as Blois, or head away from the Loire's south bank, not sticking faithfully to the Scandibérique, to explore Loire castles covered by Les Châteaux à Vélo...

The route

Alternating between greenways, cycle paths and minor roads. Take care crossing the D12 road on the Loire's north bank at the level of Muides-sur-Loire.

Surfacing smooth: mainly asphalt along this stage

Connection

At Muides Bridge, it's possible to head off to explore the network of cycling trails covered by the châteaux à vélo network and, most significantly, to adopt an alternative EV3 route going via Chambord – this magnificent stretch offers a mix of changing landscapes and iconic stops.

Link

At Muides Bridge, link to the town of Mer's SNCF train station.

Trains

- SNCF train stations at Meung sur Loire, Beaugency, Mer and Blois

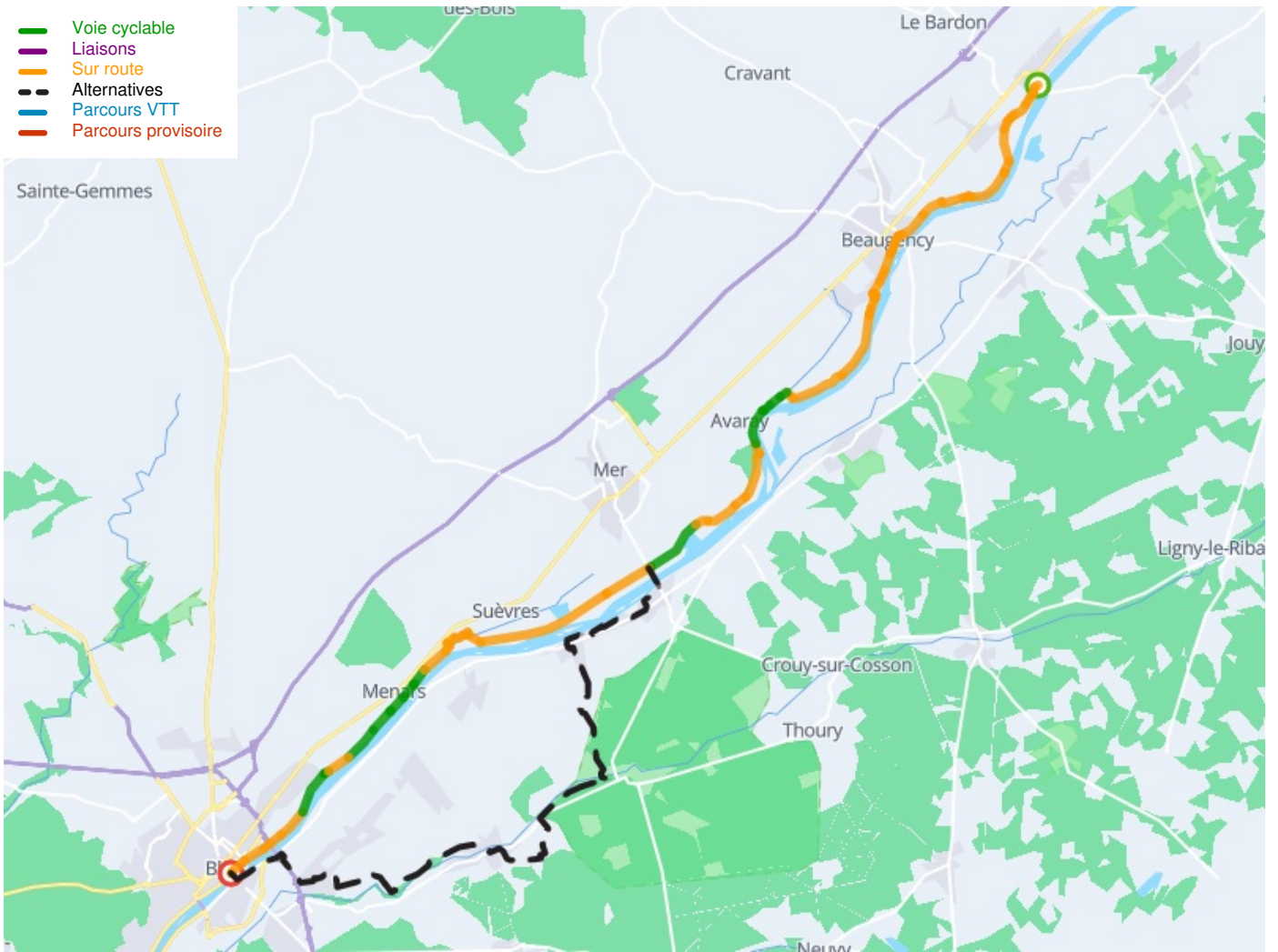
Don't miss

- **Meung-sur-Loire:** the château; Saint-Liphard collegiate church; the Jardin de Roquelin (a garden open to the public)
- **Beaugency:** the whole medieval town centre of this member of Les Plus Beaux Détours de France
- **Tavers:** Les Fontenils bubbling natural lake waters
- **Herbilly:** an historic hamlet
- **Suèvres:** the picturesque village; St Lubin Church; the mill
- **Ménars:** Château Pompadour (private, but a magnificent sight viewed from the Loire's south bank)
- **Blois:** the historic royal centre; the remarkable royal château

Close by:

- **St-Dyé-sur-Loire:** the Loire port that served for the building of the huge 16th-century Château de Chambord nearby; the remarkable basilica; the old lanes; the Maison de la Loire (with exhibitions and events around the theme of the Loire)
- The Pays des Châteaux: great châteaux in this area include Chambord, Villesavin, Cheverny and Beaugard...

- Voie cyclable
- Liaisons
- Sur route
- - - Alternatives
- Parcours VTT
- Parcours provisoire



Départ
Meung-sur-Loire



Arrivée
Blois

