

Hirson (Blangy) / Etréaupont

La Scandibérique



After visiting La Rotonde and La Tour Florentine (major 1920s railway-related constructions), Europe's largest stretch of bocage, or hedgerow-divided fields, provides a peace setting as you cycle through the Thiérache area, hawthorn hedges, apple orchards and babbling brooks marking the way. The riverside fields are sometimes flooded by the unruly Oise. Ohis Viaduct, with its giant arches stepping over the river, is the most striking feat of engineering on this surprising Axe Vert de la Thiérache.

The route

Following the Axe Vert de la Thiérache greenway, with no particular difficulties along the way. Signposted EV3.

Surfacing smooth: compacted tracks or asphalt.

Link

From Hirson train station, a former railway track heading east has been transformed into a cycle path leading to the 12th-century Benedictine Abbey of St Michael, on the edge of the forest 5km away.

Trains

- Hirson train station

Don't miss

- **Saint-Michel** and **Hirson** Forests
- **Domaine de Blangy** (with its waterfall in a strait, its outdoor recreation centre and its campsite)
- Tour Florentine and Rotonde Ferroviaire, impressive 1920s constructions connected to the marshalling yard built at Hirson train station
- **Ohis**, a charming village with a viaduct (formerly on the line Hirson, Guise, Busigny)
- **Wimy** fortified church
- Musée la Casemate at **Wimy**, a museum on the two World Wars
- Conserverie d'Ornelle (selling local produce)

Départ
Hirson

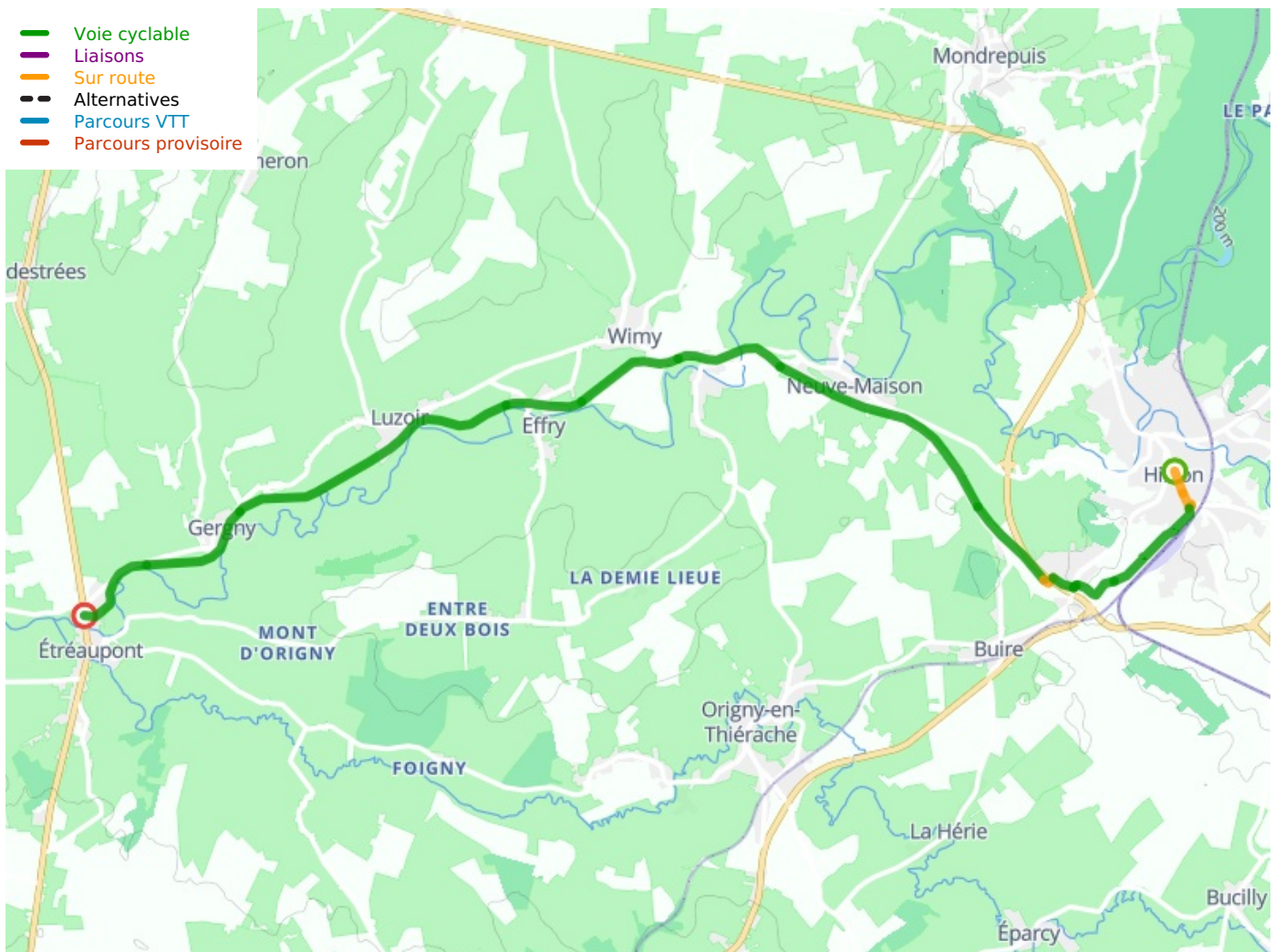
Arrivée
Etréaupont

Durée
1 h 03 min

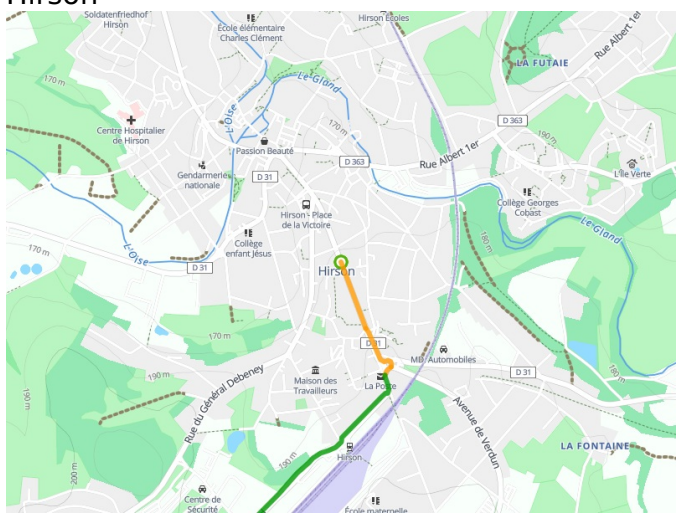
Distance
15,80 Km

Niveau
I begin / Family

Thématique
Along the water



**Départ
Hirson**



**Arrivée
Étréaupont**

